

Figure 21: A balanced slope detector with two tuned Ckt's  $T_1$  &  $T_2$  de-tuned or off-tuned by same frequency measure and connected back to back.

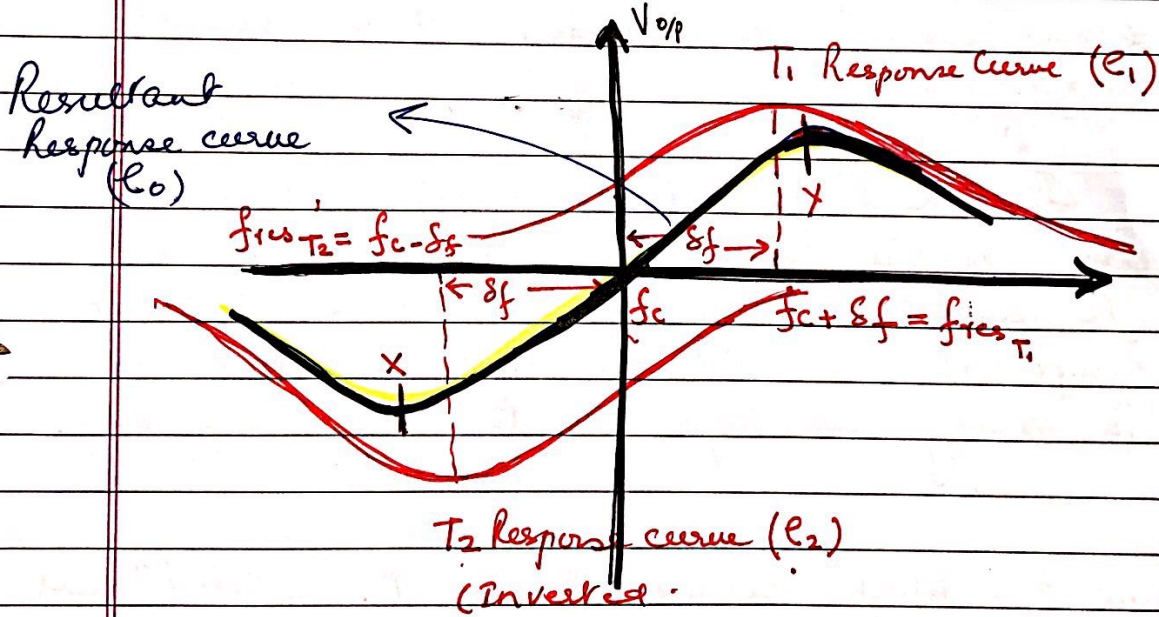


Figure 22:  $T_1$  Response Curve and inverted  $T_2$  Response curve are opposite because they are fed back to back. Net resultant will be the (bold black) response curve which is an S curve and provides a much higher linear slope as compared to single slope detector individually. Now linear slope offered is from point X to point Y. This allows large  $\beta$  FM values to be efficiently